

Cyclone Dust Collectors

Models 12, 16, 20, 24, 30, 36, and 44

Mechanical separator using centrifugal force to remove large and high-volume dust from industrial applications.

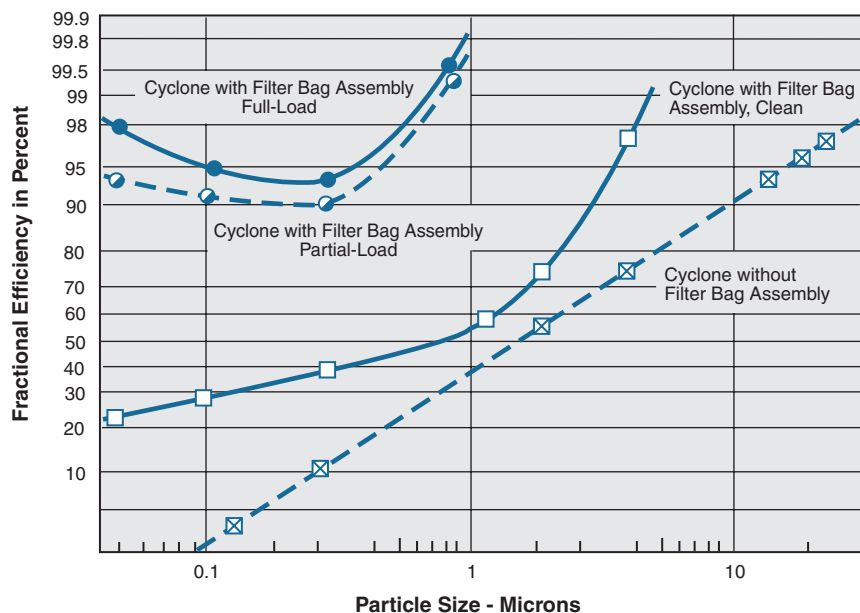


Cyclone Dust Collector
with Optional
Filter Bag Assembly

- An economical solution to a wide range of dust collection problems.
- Excellent for high dust load, high temperature, and product recovery applications.
- Can be used alone, with optional filter bag assembly, or as a pre-cleaner.
- Applications from 300 to 13,000 cfm.
- Heavy-duty construction for long life and low maintenance.
- Meets seismic zone 4 and 100 mph wind load ratings.
- Removable cone section for easy replacement.

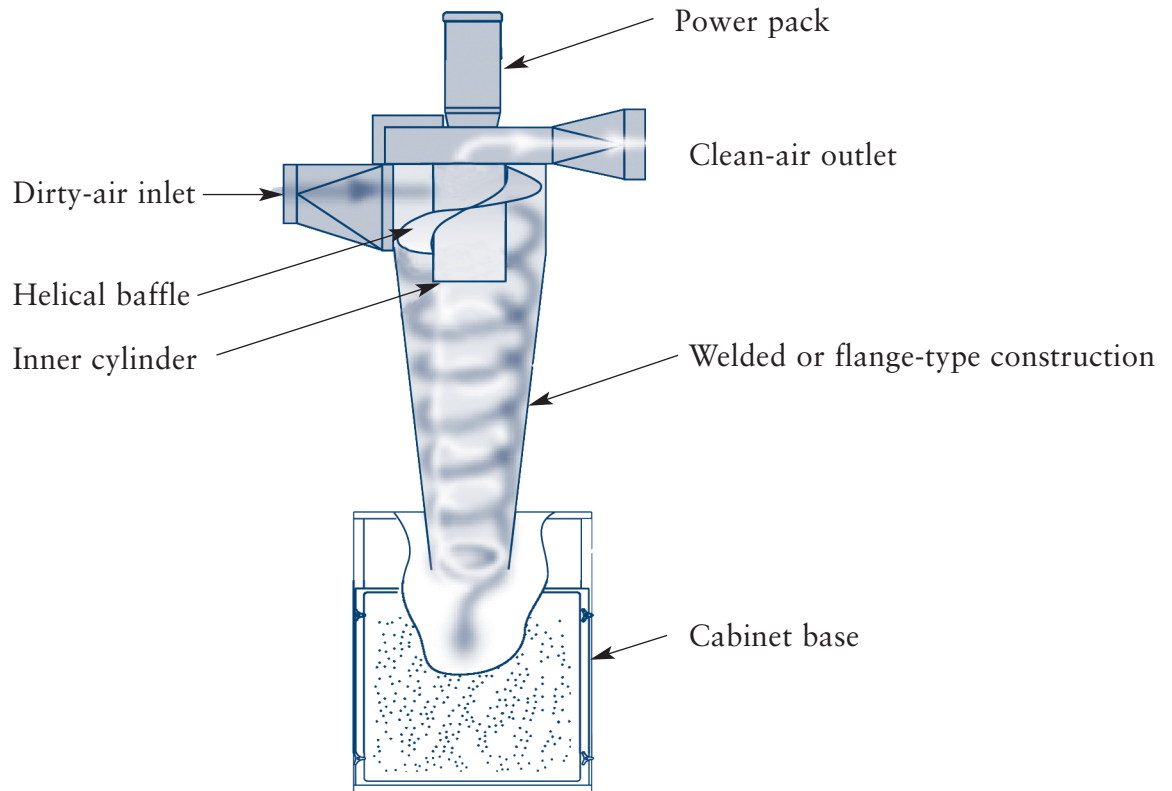
Fractional Efficiency

Fractional efficiency is the ratio of particles collected to particles entering the cyclone. This chart shows the efficiency of a Cyclone collector with and without an optional filter bag assembly under clean, partial-load, and full-load conditions. Actual efficiency may vary depending on the application. Dust concentration, airflow, particle shape, and density affect filtration efficiency.



Cyclone Dust Collectors

Operational Explanation



Dust-laden air enters the unit through the air inlet and is diverted by a helical baffle. Centrifugal force moves the heavy dust to the interior sidewalls and carries them to the base of the unit. Clean air is carried through the inner cylinder and discharges to atmosphere or optional afterfilters.

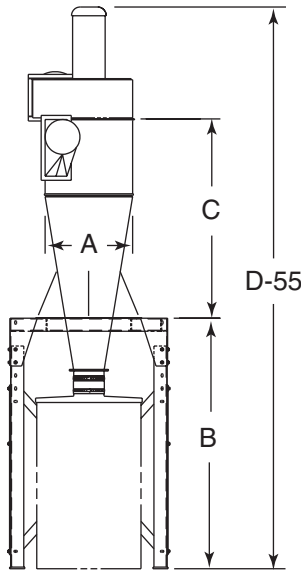
Multiple Rating Table

| Model | Nominal Airflow Range* (cfm) | External Static Pressure ("wg) | Inlet Velocity (fpm) |
|-------|---------------------------------|-----------------------------------|-------------------------|
| 12 | 311 - 540 | 5.6 - 4.1 | 3580 - 6200 |
| 16 | 860 - 1200 | 7.9 - 4.6 | 4380 - 6135 |
| 20-3 | 1250 - 2000 | 7.5 - 3.7 | 3555 - 5710 |
| 20-5 | 1500 - 2500 | 11.4 - 5.0 | 4290 - 7140 |
| 24 | 1950 - 3500 | 13.4 - 4.4 | 3580 - 6450 |
| 30-10 | 3000 - 4500 | 9.9 - 5.0 | 3820 - 5730 |
| 30-15 | 4000 - 5600 | 11.0 - 4.9 | 5100 - 7140 |
| 36-20 | 4300 - 7000 | 11.4 - 4.9 | 4015 - 6540 |
| 36-25 | 4500 - 7500 | 14.9 - 6.3 | 4210 - 7010 |
| 36-30 | 5000 - 8000 | 16.1 - 7.1 | 4670 - 7465 |
| 44-40 | 8000 - 11500 | 15.1 - 5.5 | 4530 - 6510 |
| 44-50 | 8000 - 13000 | 18.8 - 7.0 | 4530 - 7360 |

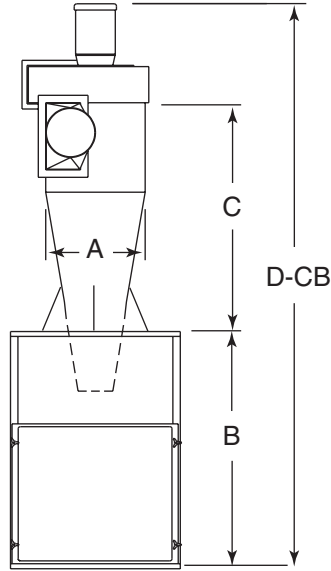
*Based on clean filter bags

Cyclone Dust Collectors

Dimensions & Specifications



55-Gallon Drum Base



Cabinet Base

| Model | Dimensions (in) | | | | |
|-------|-----------------|----|-----|------|------|
| | A | B | C | D-55 | D-CB |
| 12 | 12 | 55 | 32 | 100 | 78 |
| 16 | 16 | 55 | 36 | 108 | 86 |
| 20-3 | 20 | 55 | 48 | 121 | 114 |
| 20-5 | 20 | 55 | 48 | 123 | 116 |
| 24 | 24 | 67 | 55 | 145 | 126 |
| 30-10 | 30 | 67 | 72 | 162 | 154 |
| 30-15 | 30 | 67 | 72 | 162 | 154 |
| 36-20 | 36 | 67 | 85 | 183 | - |
| 36-25 | 36 | 67 | 85 | 186 | - |
| 36-30 | 36 | 67 | 85 | 186 | - |
| 44-40 | 44 | - | 104 | - | - |
| 44-50 | 44 | - | 104 | - | - |

| Model | Nominal Airflow Range* (cfm) | Optional Filter Bag Assembly | | Motor (hp) | Air Inlet (in) | Air Outlet (in) | Dust Capacity (ft ³) | | Shipping Weight (lbs) | |
|-------|------------------------------|--------------------------------|--------------------|------------|----------------|-----------------|----------------------------------|--------|-----------------------|-----------------------------------|
| | | Filter Area (ft ²) | No. of Filter Bags | | | | Dust Drawer | Hopper | Standard | With Optional Filter Bag Assembly |
| 12 | 300-540 | 15 | 1 | 0.75 | 4 | 6 | 4.8 | 12.0 | 325 | 350 |
| 16 | 860-1,200 | 25 | 1 | 2 | 6 | 8 | 4.8 | 12.0 | 390 | 410 |
| 20 | 1,250-2,000 | 70 | 4 | 3 or 5 | 8 | 10 | 8.5 | 19.5† | 600 | 740 |
| 24 | 1,750-2,500 | 100 | 4 | 7.5 | 10 | 12 | 8.5 | 37.5† | 750 | 850 |
| 30 | 3,000-4,500 | 200 | 8 | 10 | 12 | 14 | 16.5 | 37.5† | 1175 | 1400 |
| 30 | 4,000-5,600 | 200 | 8 | 15 | 12 | 14 | 16.5 | 37.5† | 1210 | 1486 |
| 36 | 4,000-7,000 | 300 | 12 | 20** | 14 | 16 | - | 54.0† | 2000 | 2300 |
| 36 | 4,000-7,500 | 300 | 12 | 25 | 14 | 16 | - | 54.0† | 2145 | 2445 |
| 36 | 4,000-7,500 | 300 | 12 | 30** | 14 | 16 | - | 54.0† | 2165 | 2465 |
| 44 | 8,000-11,500 | 600 | 24 | 40** | 18 | 20 | - | 103.0 | 3150 | 3550 |
| 44 | 8,000-13,000 | 600 | 24 | 50** | 18 | 20 | - | 103.0 | 3165 | 3565 |

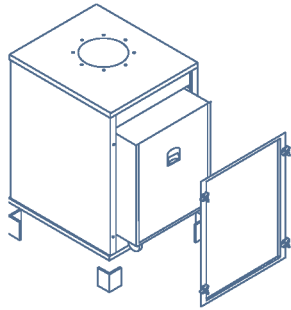
*Based on clean filters.

**Model 36-20 and 36-30 available with direct- or belt-drive blowers. Model 44 available with belt-drive blower only.

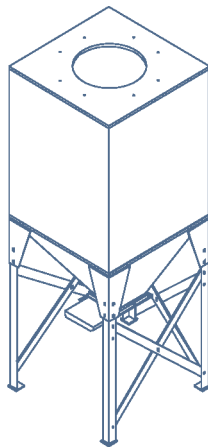
†Up to 103 cu ft hopper available.

Cyclone Dust Collectors

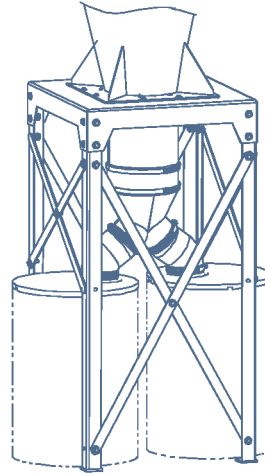
Base Options



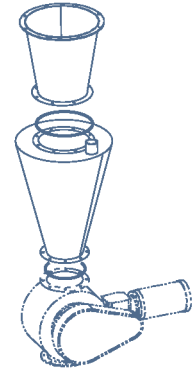
Cabinet Base



Hopper Base



55-Gallon Drum Base



Surge Hopper

Standard Features

- Inlet assembly
- 55-gallon drum base for Models 12 through 36
- TEFC motor
- 208/230/460/60/3 voltages
- 103 cu ft hopper and legs for Model 44
- 10-year warranty

Equipment Options

- Power pack
- Explosion-proof motors
- 50 Hz, single phase motors
- Steel or aluminum fan wheels
- Hopper base
- Two 55-gallon drum base for Models 20, 24, and 30
- Cabinet base for Models 12, 16, 20, 24, and 30
- Surge hopper
- Silencer
- Exhaust accessories
- Attenuator
- Filter bag options
- Filter bag enclosure
- Explosion vent



Donaldson Company, Inc.
Industrial Air Filtration
P.O. Box 1299
Minneapolis, MN 55440
Tel 800-365-1331 USA
Tel 800-343-3639 Mexico
dustmktg@mail.donaldson.com
www.donaldsonorit.com



Information in this document is subject to change without notice.

© 2003 Donaldson Co., Inc.
Printed in U.S.A. on recycled paper
Data Sheet Cyclone (7/03)